

ALUMINIUM PIVOT HINGES

Code No. P 435

APPLICATION

- For flush service closet doors.
- For wardrobes, coat & linen closets.
- For hatches and access panels etc.

ADVANTAGES

- Door frames and architraves can be eliminated.
- Simple tools and limited trade skills required.
- Painting cost reduced to roller work.
- Standard plasterboard trim and accessories.

SPECIFICATION

- **Plates & Angles:** Aluminium 6063 T6
- **Rivet Material:** Steel, Zinc Plated
- **Bearing Bush:** Nylon 6 (modified)
- **Geometry:** Centre line non-handed pivots
- **Testing:** 300,000 Cycles (50kg SC Door)

INSTALLATION GUIDE ONLY

- **Door thickness: 35mm.**
- Standard Door: Solid Core 2400 (h) x 920 (W) x 50 kg
- Please turn over for greater detail.

FIXING

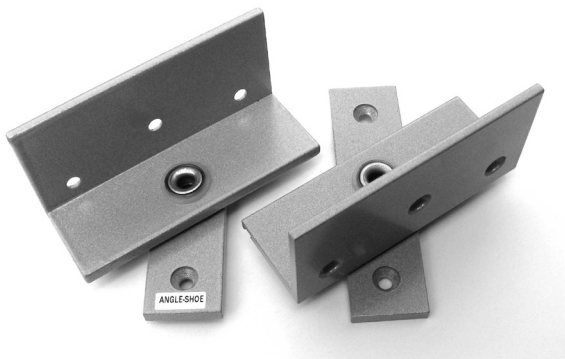
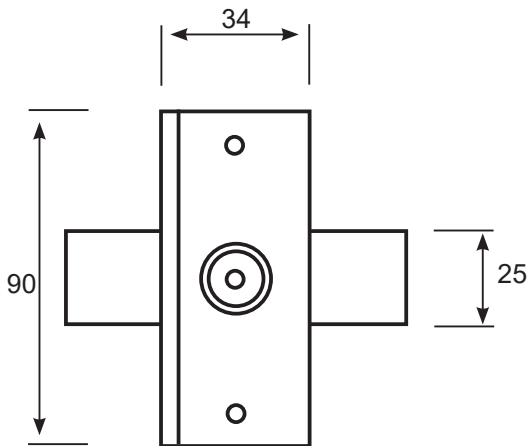
- **Fastening screws supplied.**
- Pop rivets are not recommended.

FINISH

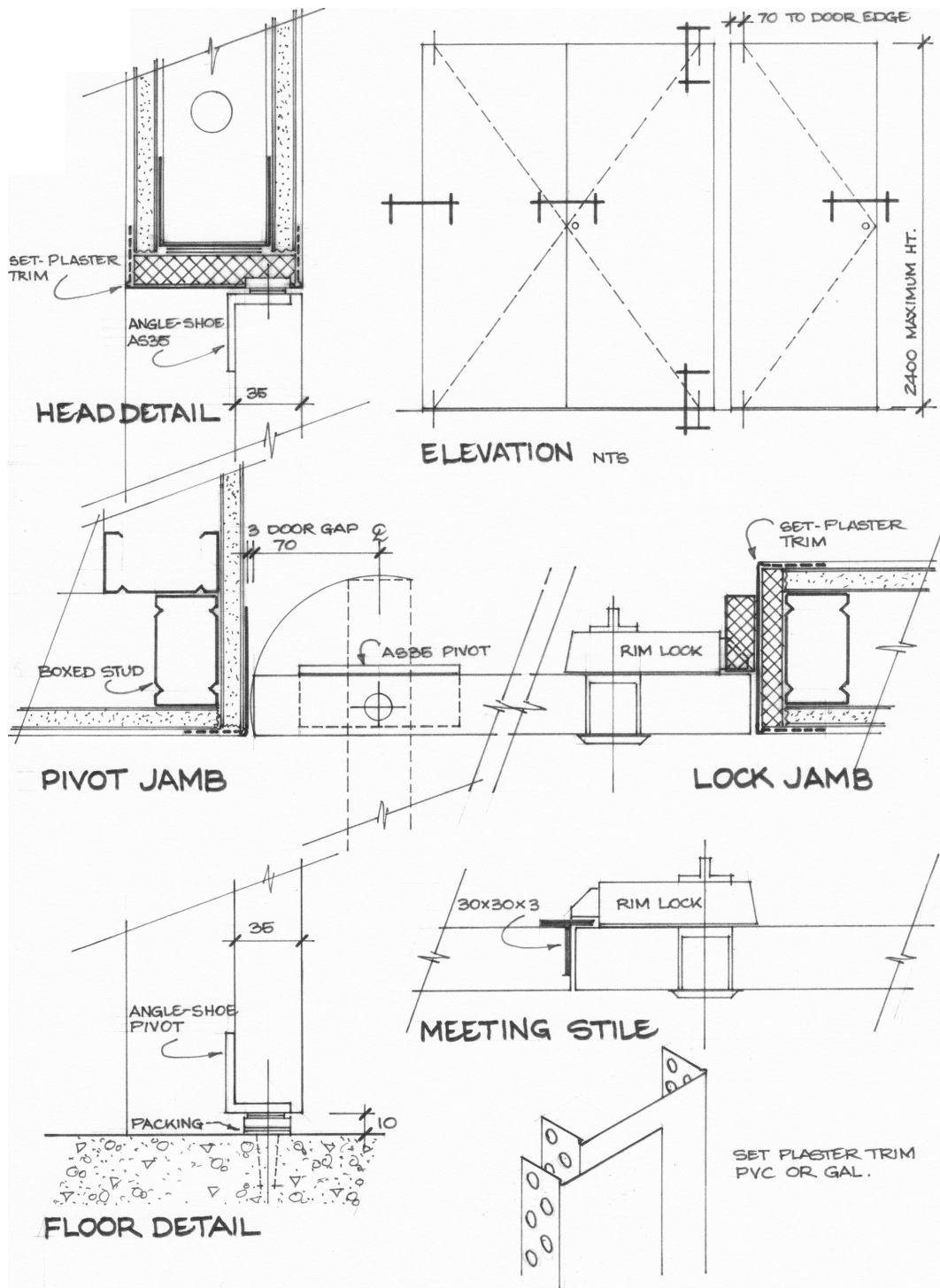
- Silver-Grey Powder coated

NOTES

- Product Design: Howard Styles - Architect



ALUMINIUM PIVOT HINGES



FLUSH PIVOT DOORS FOR SERVICE CLOSETS
SKETCH DETAILS